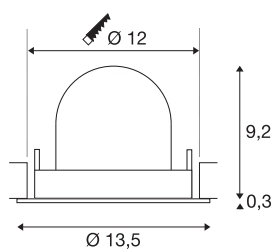




NUMINOS® GIMBLE M

Recessed ceiling light, 4000 K, 20°, black

The NUMINOS light system from SLV combines technology, design and functionality like no other. This way, you can experience a thousand lighting design possibilities with different downlights and spotlights. Like with the NUMINOS® GIMBLE M recessed ceiling light, which impresses with its high-quality workmanship and light. Ideal for discreet, modern and space-saving lighting that draws the focus to objects or the room. Installation is then done in no time at all. When to choose NUMINOS from SLV – modular diversity awaits you.



TECHNICAL DATA

Item no.	1009577
Number of different light outlets	1
Rotating or tilting	rotary bar and tiltable
IP Code	IP20
Assembly	Recessed
Assembly details	Ceiling
Secondary power / voltage	350 mA
Safety class	III
Wattage	12 W
Minimum ambient temperature	-20 °C
Maximum ambient temperature	40 °C
Lumen	1900 lm
Colour temperature	4000 Kelvin
Beam angle	20 °
Color	black
CRI	90
UGR ≤	19
Service life	50000 h
Risk Group	1
Height	9.5 cm
Diameter	13.5 cm
Net weight	0.41 kg

Light Source

2093752	
---------	---

Accessories

1010704	LED driver , 23W, 350 mA, DALI
1006143	Numinos® M Reducing ring , round 240/120 mm black
1010700	LED driver , 20W, 350 mA, PHASE
1010683	NUMINOS® M , Honey-comb diffuser
1006146	Numinos® M Reducing ring , square 240/120 mm white
1006144	Numinos® M Reducing ring , round 240/120 mm white
1010686	NUMINOS® M , Elliptical diffuser
1010684	NUMINOS® M , Prismatic diffuser
1006145	Numinos® M Reducing ring , square 240/120 mm black
1010696	LED driver , 21W, 350 mA
1010685	NUMINOS® M , frosted diffuser
1010129	NUMINOS® M , reflector, gold
1010130	NUMINOS® M , reflector, copper

Gross weight	0.56 kg
Shape of cut-out	round
Installation depth	9.5 cm
Installation diameter	12 cm
BIG WHITE Page	49