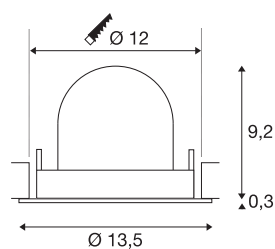




## NUMINOS® GIMBLE M

Recessed ceiling light, 4000 K, 40°, black / white

NUMINOS is the optimally coordinated light system from SLV that combines function, design and technology. With a variety of downlights and spotlights, you provide a thousand lighting design options. This also includes NUMINOS® GIMBLE M, which impresses as a recessed ceiling light with the best workmanship and lighting quality. Ideal for harmonious, modern and space-saving lighting that directs the accent to objects or the room. Installation is then done in no time at all. When do you choose NUMINOS ® from SLV?



## TECHNICAL DATA

Item no.	1009581
Number of different light outlets	1
Rotating or tilting	rotary bar and tiltable
IP Code	IP20
Assembly	Recessed
Assembly details	Ceiling
Secondary power / voltage	350 mA
Safety class	III
Wattage	12 W
Minimum ambient temperature	-20 °C
Maximum ambient temperature	40 °C
Lumen	1900 lm
Colour temperature	4000 Kelvin
Beam angle	40 °
Color	black/white
CRI	90
UGR ≤	19
Service life	50000 h
Risk Group	1
Height	9.5 cm
Diameter	13.5 cm
Net weight	0.41 kg

## Light Source

2093752	
---------	---

### Accessories

1010704	LED driver , 23W, 350 mA, DALI
1006143	Numinos® M Reducing ring , round 240/120 mm black
1010700	LED driver , 20W, 350 mA, PHASE
1010683	NUMINOS® M , Honey-comb diffuser
1006146	Numinos® M Reducing ring , square 240/120 mm white
1006144	Numinos® M Reducing ring , round 240/120 mm white
1010686	NUMINOS® M , Elliptical diffuser
1010684	NUMINOS® M , Prismatic diffuser
1006145	Numinos® M Reducing ring , square 240/120 mm black
1010696	LED driver , 21W, 350 mA
1010685	NUMINOS® M , frosted diffuser
1010129	NUMINOS® M , reflector, gold
1010130	NUMINOS® M , reflector, copper

Gross weight	0.56 kg
Shape of cut-out	round
Installation depth	9.5 cm
Installation diameter	12 cm