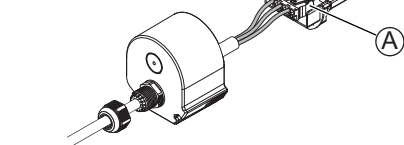


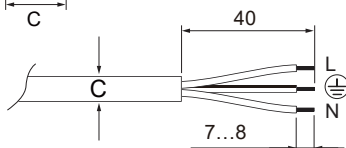
Installation Steps

5-a Connecting Power ON / OFF

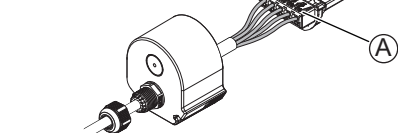


3 Wires specification:

Outer diameter: $\varnothing 8\text{mm} \leq C \leq 12\text{mm}$
Core of cable: $3 \times 2.5\text{mm}^2$

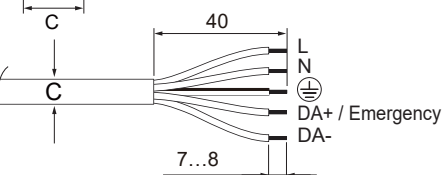


5-b Connecting Power DALI

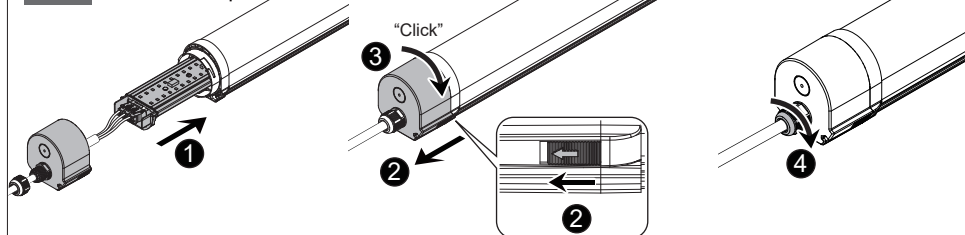


5 Wires specification:

Outer diameter: $\varnothing 8\text{mm} \leq C \leq 12\text{mm}$
Core of cable: $5 \times 2.5\text{mm}^2$

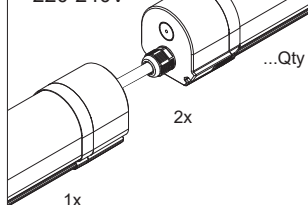


6 Close the cap



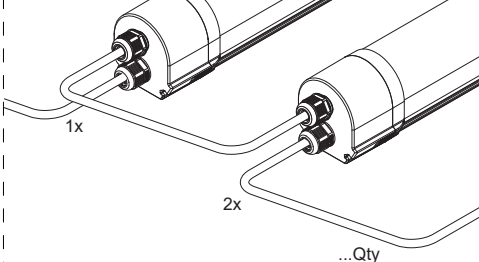
7-a

220-240V



Power (W)	2.5mm ² Cable Qty
12	214
15	171
16	161
17	151
20	128
23	112
27	95
28	92
34	75
40	64

7-b



Waterproof V Installation Manual



IMPORTANT SAFETY NOTES



WARNING

RISK OF ELECTRIC SHOCK

BEFORE YOU BEGIN

- Read these instructions completely and carefully.
- The installation and connection of the luminaire must be done when switched off and by qualified people. Make sure no voltage while installation.



CAUTION

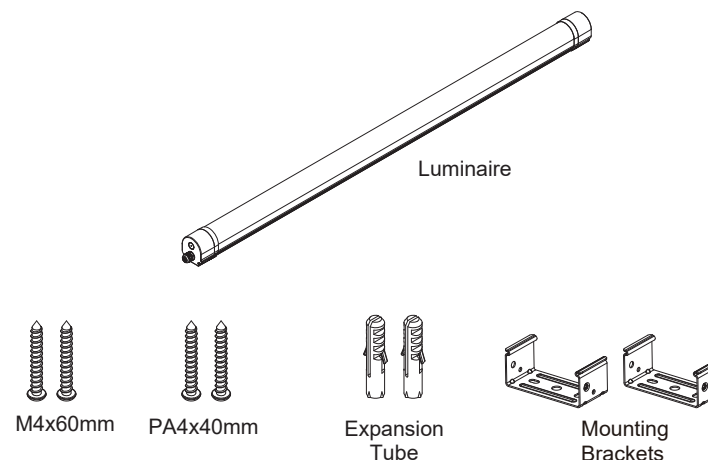
MAINTENANCE

- To avoid injuries, disconnect power to the light and allow the unit to cool down before performing maintenance.
- Perform visual, mechanical and electrical inspections on a regular basis. We recommend routine checks to be made on an annual basis. Frequency of use and environment should determine this.
- The Covers should be cleaned periodically as needed to ensure continued photometric performance. Clean the Cover with a damp, non-abrasive, lintfree cloth. If not sufficient, use mild soap or a liquid cleaner. Do not use an abrasive, strong alkaline or acid cleaner as damage may occur.
- Inspect the topside on the luminaire to ensure that it is free of any obstructions or contamination (i.e. excessive dust build-up). Clean with a non-abrasive cloth if needed.

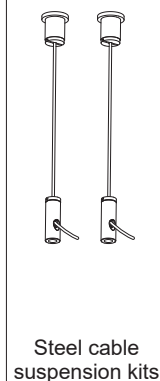


This product contains a light source of energy efficiency class D.

Products



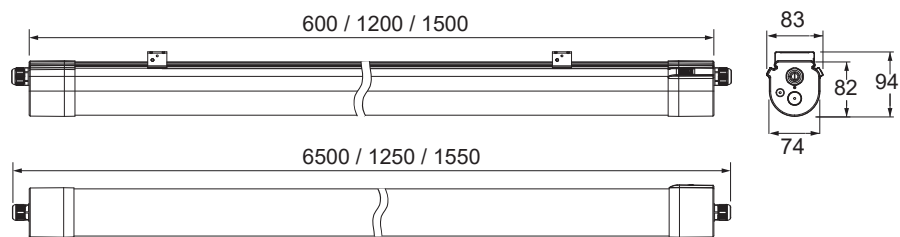
Optional



DWG-P0000 (A)

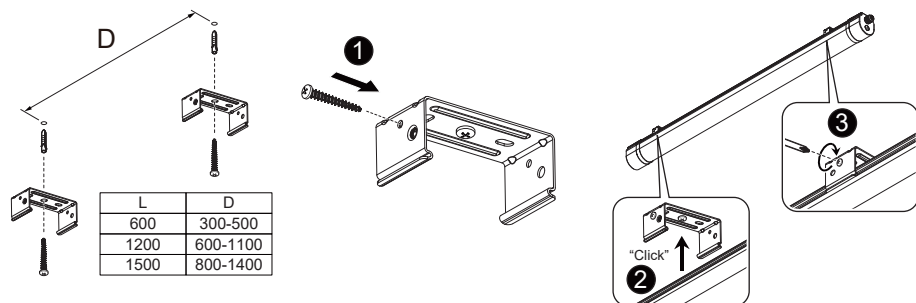
Dimensions

[mm]

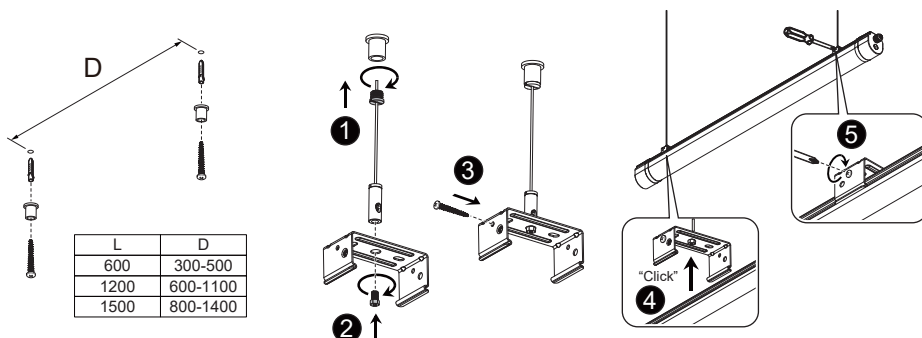


Installation Steps

1-a Surface mounted

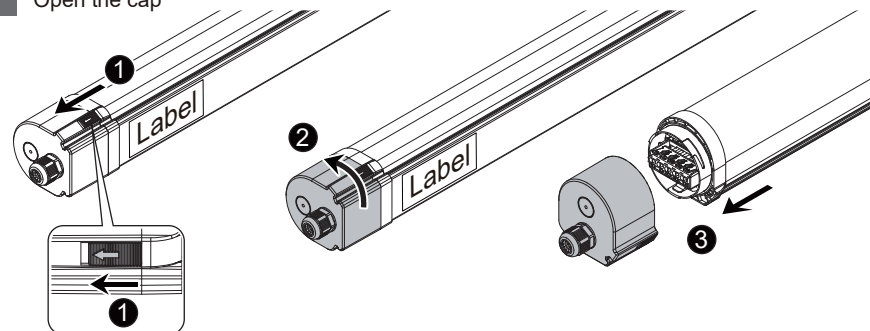


1-b Suspended mounted

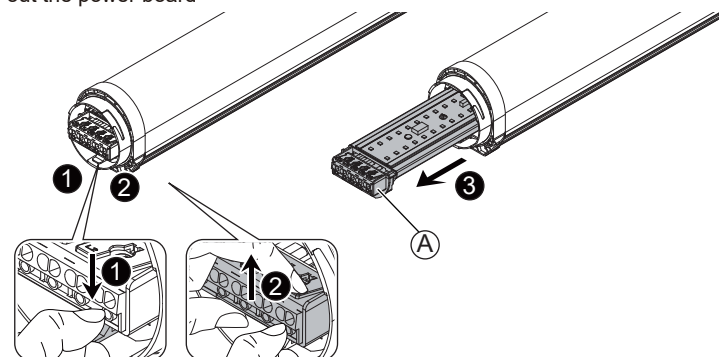


Installation Steps

2 Open the cap



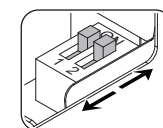
3 Pull out the power board



4 Wattage & CCT Setting

Wattage setting:

mA	1	2	Power(W)		
			600mm	1200mm	1500mm
200	OFF	OFF	12	16	23
250	OFF	ON	15	20	28
300	ON	OFF	17	23	34
350	ON	ON	20	27	40



CCT setting:

